



Tactical Broadband HF Antenna

2-30MHz

02-2176

AT A GLANCE

2 to 30MHz

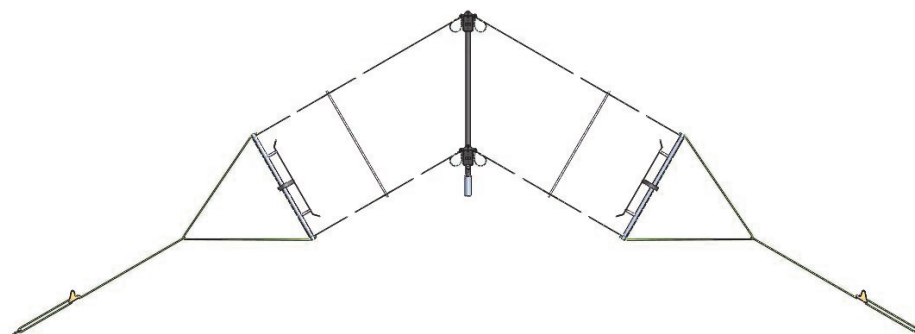
125W PEP

No ATU required

Man-portable

2 person erection in 5 minutes

NVIS operation



Antenna shown truncated for clarity

The **Lencom®** 2176 Tactical Broadband HF Antenna has been designed to be man-portable and rapidly deployable for NVIS operation.

It covers the entire frequency range of 2-30MHz with no gaps and a power rating of 125W PEP.

No antenna tuner is required.

The antenna is constructed of Kevlar reinforced antenna wire for strength, long life and immunity to kinking.

Installation is quick and easy as the antenna comes in a bag as a single piece.

To install, the antenna simply needs to be unrolled and the coaxial cable attached. End anchor stakes are included.

The antenna is fully assembled, and no specialised tools are needed for installation.

It is designed to drop directly over any mast that has an outer diameter top section of 22.23mm, or into one that has an inner diameter top section of 32mm.

The Lencom [02-2165-002 10m](#) and [02-2166-002 6m](#) tactical masts are designed specifically to go with this antenna.

10m is the optimum height for general communications, and 6m will improve Near Vertical Incidence Skywave (NVIS) radiation for communications over shorter distances.

Specifications subject to change without notice

Lencom Antennas Pty. Ltd. 8 Antonio Court, Newton, South Australia 5074
Tel.: +61 8 8365 1900 Fax.: +61 8 8365 3070
Website: www.lencom.com.au Email: info@lencom.com.au



ISO 9001:2008



Tactical Broadband HF Antenna

2-30MHz

02-2176

AT A GLANCE

2 to 30MHz

125W PEP

No ATU required

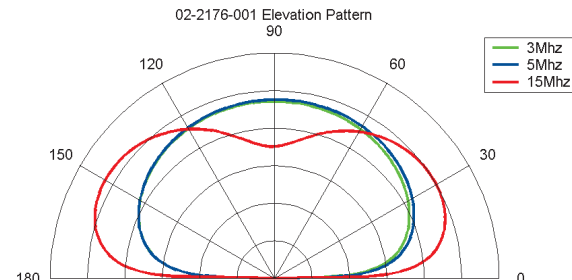
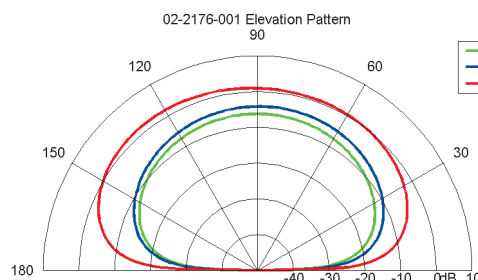
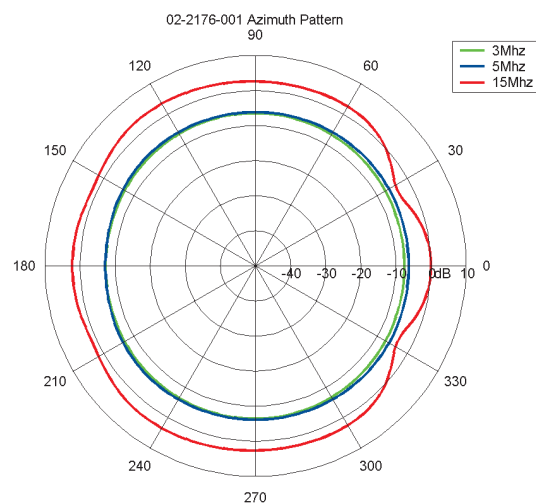
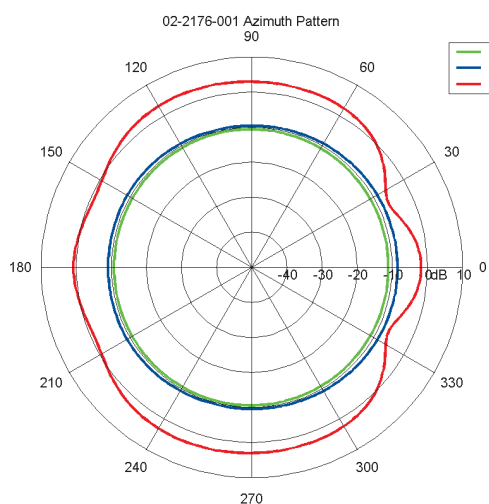
Man-portable

2 person erection in 5 minutes

NVIS operation

Specifications

| | |
|------------------------------|---|
| Frequency range | 2-30MHz |
| Power rating | 125W PEP, 60W average |
| Input impedance | 50Ω |
| VSWR over range | Generally <2:1 |
| RF connector type | N socket |
| Wind rating | 160km/hr, no ice |
| Mounting hardware | All supplied |
| Package details (Packed bag) | 5kg, including anchor stakes |
| Suggested Masts | Lencom 02-2165-002 10m tactical mast Lencom 02-2166-002 6m tactical mast |
| Anchor stake spacing | Typically 31m (6m mast), 36m (10m mast) |



Antennas were modelled above perfect earth
Azimuth slice taken at an elevation of 35° from the horizon
The dipole elements run along the 0° to 180° line
Elevation slice taken at an azimuth angle of 90° from broadside
Gain is absolute in dBi



ISO 9001:2008