



## 7.7m Long-whip

01-00017 (roof) | 01-00025 (ground)

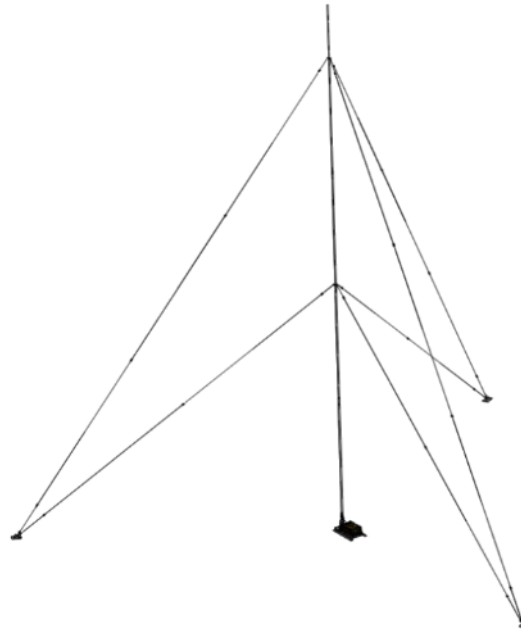


Figure 1 – 02-00251-09 Installed Antenna

The Lecom® 01-00017 (roof mount) and 01-00025 (ground mount) whips are designed to pair with Lecom's automatic tuning units.

High tensile aluminium construction and stainless steel guys provides a strong, but lightweight whip that is perfect for short or long-term installations.

The whip is simple to erect and can be put up by one person.

The base of the whip is custom built to serve as a multi-angle support for the whip, so that it can be installed vertically regardless of the angle of the ground or the roof.

The platform is designed to securely attach the 4006 automatic tuning unit, but the whip can be used with other tuner variants. The whip is 7.7m long and produces an omnidirectional radiation pattern. The length of the whip dramatically improves the efficiency of the tuning unit.



Figure 2 - Base with 4006

The roof mount version comes with roof anchors while the ground mount version has steel stakes to be used as anchors.

The guys are attached using dielectric guy plates and are insulated to avoid any impact on the radiating element.



Figure 3 - Insulated Guys



# 7.7m Long-whip

## 01-00017 (roof) | 01-00025 (ground)

### Key Characteristics

Data Sheet

<i>Frequency range</i>	ATU Dependent
<i>Power rating</i>	1kW
<i>Nominal impedance</i>	Untuned
<i>Radiation pattern</i>	Omnidirectional
<i>Polarisation</i>	Vertical
<i>Height</i>	7.7m
<i>Construction</i>	
<i>Whip</i>	High tensile aluminium
<i>Base</i>	Galvanised steel
<i>Guys</i>	Marine grade stainless steel

### AVAILABLE ACCESSORIES

<b><i>Automatic Tuner</i></b>	<b><i>Earthing kit</i></b>	<b><i>Coaxial Cable</i></b>	<b><i>Lightning Arrestor</i></b>
4006 – 125W tuner	Earthing kit	Available to customer specifications	Lightning arrestor
4100 – 1kW tuner			

*Specifications subject to change without notice*