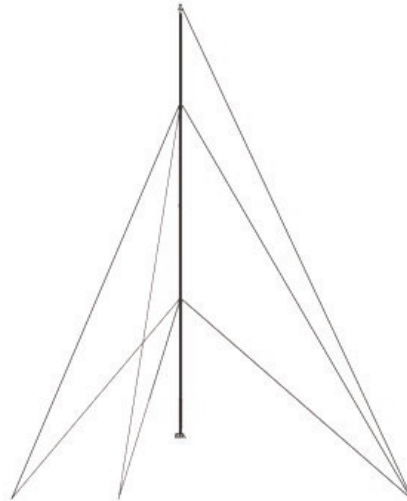




Aluminium Mast Model 2170

AT A GLANCE

- Extremely light-weight**
- Easily transported**
- Rapid deployment**
- One person installation**
- Versatile—centre or end antenna support**
- Mast/antenna packages available**



The Lencom 2170 is an extremely light-weight aluminium mast designed to support HF wire antennas, although it can also support VHF and UHF antennas.

10m high, it only weighs 18.5kg and can be erected quickly by one person.

Light weight and transportable, it is designed for quick deployment and temporary to medium term (3+ years) installations.

Constructed of marine-grade aluminium tubing, the 2170 comprises five 2m sections that simply slide together.

The 2170 is guyed three ways at the 4m and 8m levels, and is supplied with a standard back-stay guy at the 10m level for when antennas such as semi-deltas are mounted on one side, or when two masts are used to support a dipole-type antenna.

Colour-coded guys are supplied for ease of recognition at installation.

Star pickets are supplied for the guys, pre-fitted with galvanised shackles.

A full installation kit is supplied —refer illustration on Page 2.

An optional gibbet is available if the mast is used as the sole support for an HF antenna in inverted "V" configuration.

A custom re-deployable 2-30MHz broadband dipole can be supplied specifically for use with this mast—refer ordering details on Page 2. This antenna does not require a gibbet when erected with this mast.

The mast is supplied either as raw aluminium or painted black.



Aluminium Mast Model 2170

AT A GLANCE

Extremely light-weight

Easily transported

Rapid deployment

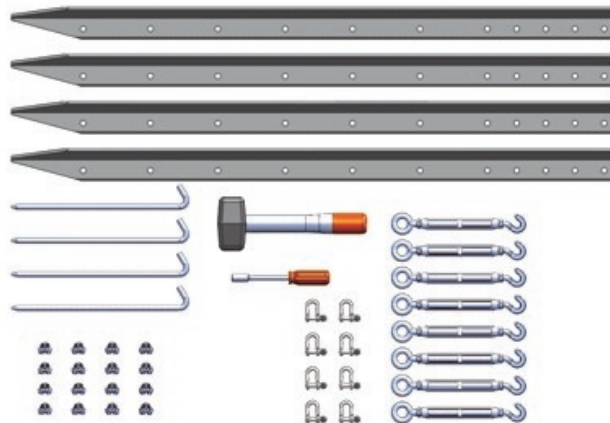
One person installation

Versatile—centre or end antenna support

Mast/antenna packages available

Specifications

Height	10m
Guy Radius	6.5m
Mast Weight	10kg; 18.5kg including star pickets
Packed Mast Weight	20kg
Packed Mast Dimensions	2,100mm x 300mm x 125mm
Temperature range	Operational -55°C to +80°C



Supplied Installation Kit

Ordering Details

02-2170-001	Mast, raw aluminium finish
02-2170-101	Mast, painted matt black
04-0110-001	Gibbet
01-1003-001	Mast, natural finish, c/w 27m broadband dipole antenna
01-1003-011	Mast, natural finish, c/w 34m broadband dipole antenna
01-1003-021	Mast, natural finish, c/w 43m broadband dipole antenna
01-1003-101	Mast, matt black finish, c/w 27m broadband dipole antenna
01-1003-111	Mast, matt black finish, c/w 34m broadband dipole antenna
01-1003-121	Mast, matt black finish, c/w 43m broadband dipole antenna

Specifications subject to change without notice