



Automatic Antenna Tuning Units

4002 | 4006 | 2-30MHz | 150W

02

Data Sheet



Figure 1 – 4002/4006 Automatic Tuning Units

The Lencom® 4002 and 4006 are designed specifically for vehicular whip antennas, and are rapid, highly efficient, reliable tuners.

They are extremely rugged and meet MIL-STD 810F for, shock and vibration and are designed to IP67.

A wide range of accessories are available.

Product Information

The 4002 is optimised to tune a 1.6m whip from 2.5-30MHz with a VSWR typically of 1.5:1 or better. An optional 800mm riser enables operation from 2 to 30MHz.

The 4006 is identical but can also tune whips up to 10m in length.

The unique tuning algorithm provides a memory-tune location for all frequencies.

With memory tuning time of <130ms, these tuners are ideal for networks using ALE and/or frequency hopping, with tuning times for new frequencies average less than 1 second



Automatic Antenna Tuning Units

4002 | 4006 | 2-30MHz | 150W

02

Key Characteristics

Whip Lengths	2.4m to max	1.6-2.4m
Frequency range	2-30MHZ	3-30MHZ
Power rating for full data transfer	150W	125W
Input impedance	50Ω	
VSWR	Typical < 1.5	
Tune Time	Memory 130ms Initial Tune 1s (typical)	
Power Consumption	Tuned: 400mA Typical <800mA	
Memory Channels	Unlimited	
Efficiency	Up to 95% (whip length dependant)	

Data Sheet

Mechanical

RF Connector Type	N socket
Control Connector Type	6 Pin Bayonet
Operational Temperature	-20 to +55°C
Finish	Powder coat in white or military green
Enclosure	Bespoke aluminium housing sealed to IP67
Shock and Vibration	Rated MIL-STD-810F
Dimensions	300mm (L) x 210mm (W) x 95mm (H)
Weight	2.4kg



Available Accessories

Data Sheet

Antenna Mounts/Brackets



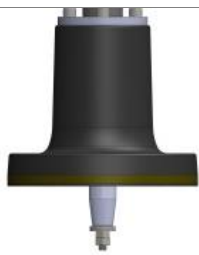
Flange Mont HV Base

02-4024



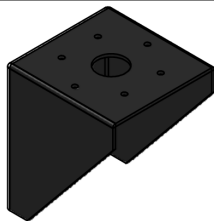
Single-hole HV Base

02-4022



Military HV Base

03-4715



Mounting Bracket

60-4017

Radiators



Long wire (9m)

02-2181

Large range of whips for military or commercial in stainless steel, fibreglass and carbon fibre
